

6

5

4

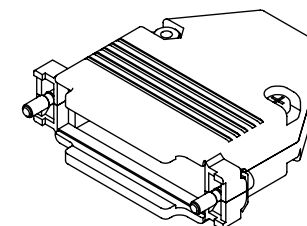
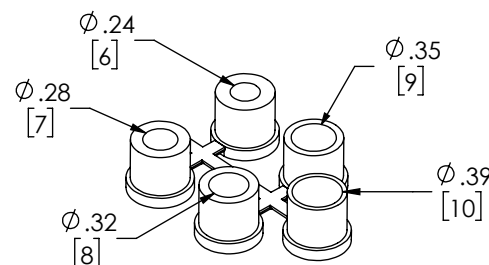
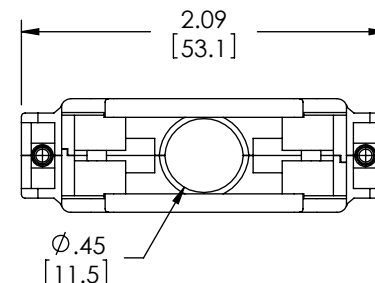
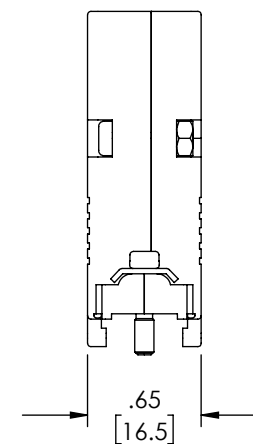
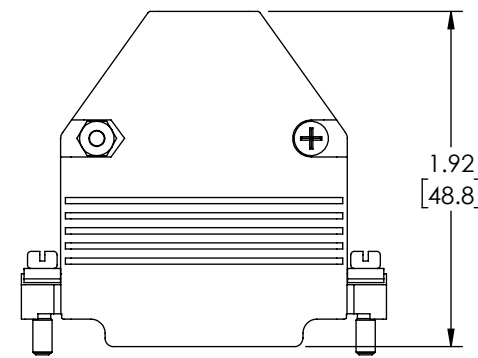
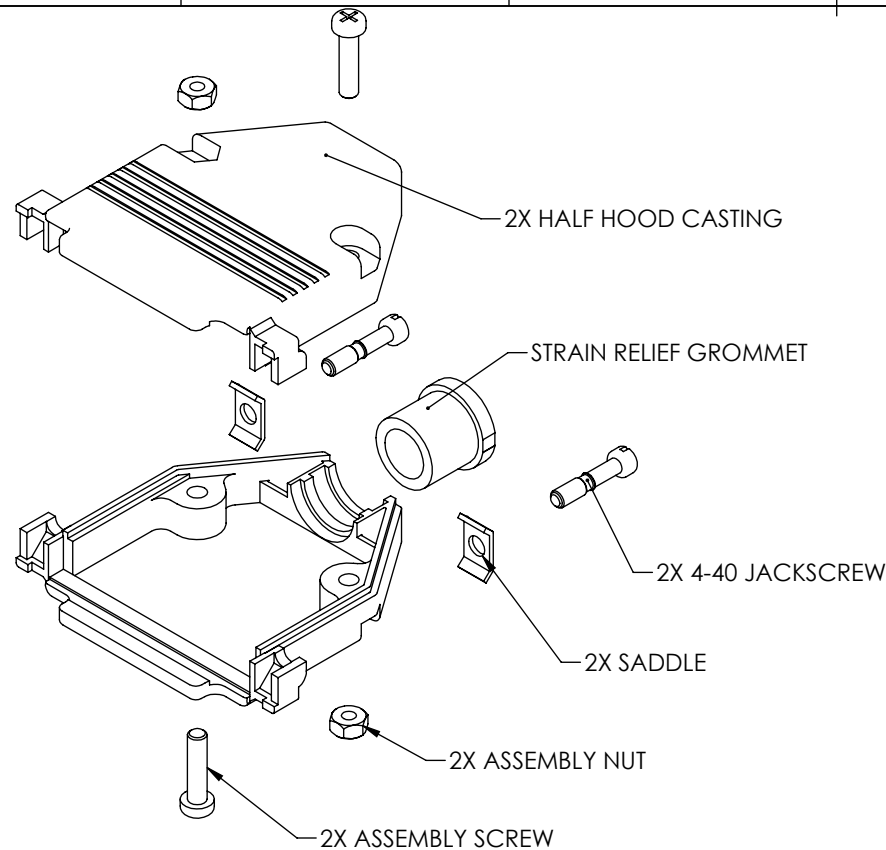
3

2

1

REVISION

ZONE	REV	DESCRIPTION	DATE	CHANGED BY	APPROVED
	A	INITIAL RELEASE	07/10/2025	SLI	WLI



NOTES:

MATERIAL:
 HOOD: DIE-CAST ZINC ALLOY
 JACKSCREWS: STAINLESS STEEL
 ASSEMBLY HARDWARE: STEEL
 STRAIN RELIEF GROMMETS: TPE, BLACK

FINISH:
 HOOD: NICKEL PLATED, MATTE FINISH ON MAJOR SURFACES
 ASSEMBLY HARDWARE: NICKEL PLATED

MISCELLANEOUS:
 INTENDED FOR USE WITH 25-PIN STANDARD AND 44-PIN HIGH DENSITY D-SUBMINIATURE CONNECTORS.
 SUPPLIED WITH 5 STRAIN RELIEF GROMMETS FOR CABLE HAVING DIAMETERS RANGING FROM .236 TO .394 INCH.

REGULATORY COMPLIANCE:
 EU RoHS DIRECTIVE (MOST RECENT RELEASED VERSION)

THE INFORMATION CONTAINED IN THIS DRAWING IS THE SOLE PROPERTY OF INFINITE ELECTRONICS, INC. ANY REPRODUCTION IN PART OR WHOLE WITHOUT THE WRITTEN PERMISSION OF INFINITE ELECTRONICS, INC. IS PROHIBITED. THESE COMMODITIES, TECHNOLOGY OR SOFTWARE WERE EXPORTED FROM THE UNITED STATES IN ACCORDANCE WITH THE EXPORT ADMINISTRATION REGULATIONS. DIVERSION CONTRARY TO U.S. LAW PROHIBITED.

6

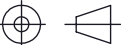
5

4

3

2

1

UNLESS OTHERWISE SPECIFIED LEADING DIMENSIONS ARE INCHES DIMENSIONS IN [] ARE MILLIMETERS		<div>L-com®</div> <div>an INFINIT® brand</div> <div>Website: www.L-com.com</div> <div>Phone: 1.800.341.5266 1.978.682.6936</div>		<div></div> <div>INTERPRET ALL DIMENSIONS AND TOLERANCES PER ASME Y14.5</div>	
TOLERANCES:				SCALE	SHEET
<div>X = ±.2 [5] FRACTIONS</div> <div>XX = ±.02 [0.5] ± 1/32</div> <div>XXX = ±.005 [0.13] ANGLES ± 1°</div>		NONE	1 OF 1		
CABLE LENGTH TOLERANCES:		DESCRIPTION			
<div>≤12 [305] = +1 [25] / -0</div> <div>>12 [305] ≤ 60 [1524] = +2 [51] / -0</div> <div>>60 [1524] ≤ 120 [3048] = +4 [102] / -0</div> <div>>120 [3048] ≤ 300 [7620] = +6 [152] / -0</div> <div>>300 [7620] = +5% / -0</div>					
ALL DIMENSIONS ARE FOR REFERENCE ONLY AND SUBJECT TO CHANGE WITHOUT NOTICE. UN-DIMENSIONED/NON-CRITICAL FEATURES MAY VARY IN SIZE AND LOCATION COLORS MAY VARY		Assembled D-Sub Metal Hood Kits, DB25/HD44			
SIZE	CAGE CODE	DRAWN BY	ITEM NO.	REV.	
A	43321	SLI	HKDB25AM	A	