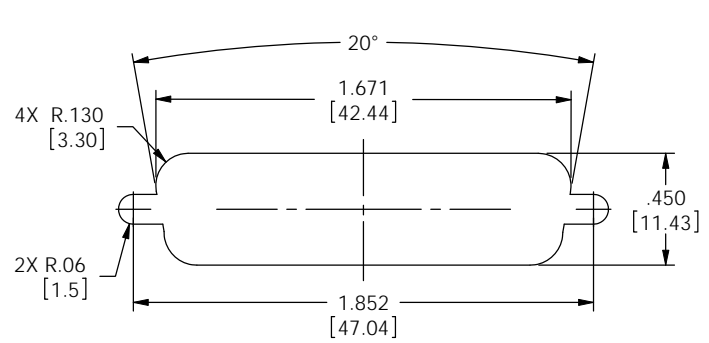


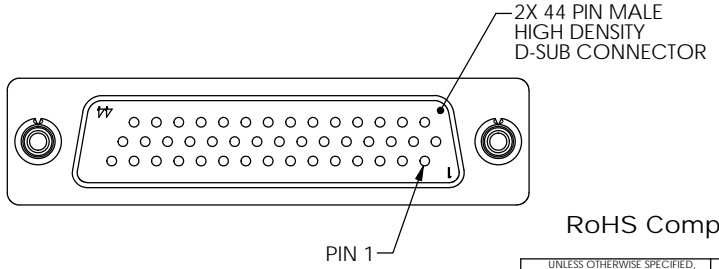
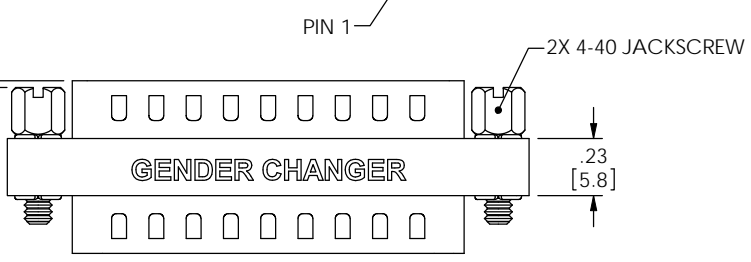
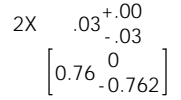
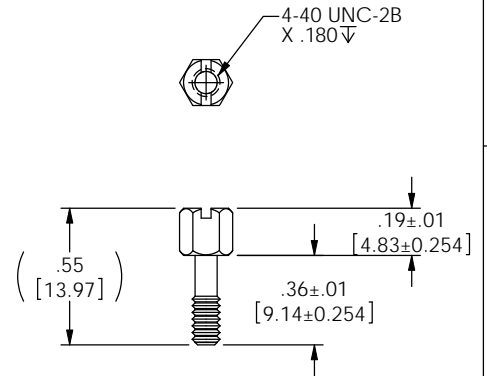
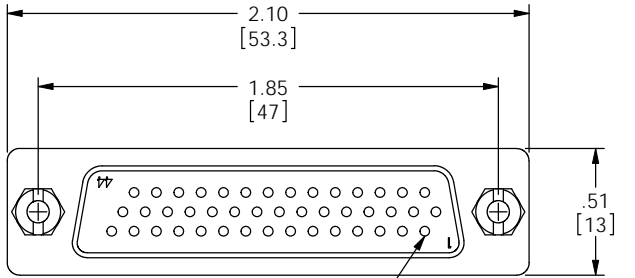
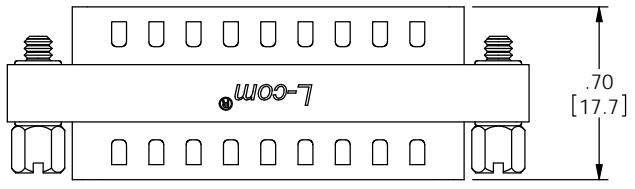
THE INFORMATION CONTAINED IN THIS DRAWING IS THE SOLE PROPERTY OF L-COM, INC. ANY REPRODUCTIONS IN PART OR WHOLE WITHOUT THE WRITTEN PERMISSION OF L-COM, INC. IS PROHIBITED.

| REVISIONS | | | |
|-----------|---|---------|-------------|
| REV | DESCRIPTION | DATE | CHANGED BY |
| F | ECN 4564-ADDED ROHS, UPDATED DRAWING AND NEW FORMAT | 3/2/10 | D.FRISIELLO |
| G | ECN 5937-ADDED NOTE FOR PANEL MOUNTING | 1/25/12 | D.FRISIELLO |



RECOMMENDED PANEL OPENING
(MAX PANEL THICKNESS: .06")

G NOTE: DIFFERENT STANDOFFS AND JACK SCREWS ARE REQUIRED FOR PANEL MOUNTING. SEE WWW.L-COM.COM OR MASTER CATALOG FOR DETAILS.



NOTES:

MATERIAL:
SHELL: STEEL
PINS: COPPER ALLOY
HARDWARE: BRASS
INSULATOR: PBT FIBER REINFORCED (UL94V-0 RATED)

FINISH:
SHELL: TIN/NICKEL PLATED
PINS: GOLD FLASH PLATED
HARDWARE: NICKEL PLATED

ELECTRICAL:
CURRENT RATING: 3 AMP

MISCELLANEOUS:
OPERATING TEMPERATURE RANGE: -55°C TO +105°C.
ALL PINS ARE WIRED STRAIGHT THROUGH.
COMPONENT SHALL BE TESTED FOR CONTINUITY.

LABELING:
PANTONE 2945 BLUE. "L-COM" FONT MyriaMM ITALIC.
"GENDER CHANGER" FONT ARIAL BOLD, TEXT HEIGHTS: .085"
TEXT COLOR: WHITE.

PACKAGING:
COMPONENT SHALL BE INDIVIDUALLY PACKAGED IN ACCORDANCE WITH L-COM SPECIFICATION PS-0031.

RoHS Compliant ✓

| | | |
|---|--|----------|
| UNLESS OTHERWISE SPECIFIED, DIMENSIONS ARE IN INCHES (mm) | APPROVALS | DATE |
| DIMENSIONAL TOLERANCES: .X = ±.1 .XX = ±.01 .XXX = ±.005 | DRAWN BY D.PARRIAM | 03/01/02 |
| ANGULAR TOLERANCES: ALL = ±1° | CHECKED BY T.CLARK | 03/01/02 |
| PROJECTION | APPROVED BY R.CARRICK | 03/01/02 |
| | CONFIGURATION DETAILS OF UNDIMENSIONED FEATURES MAY VARY | |
| | COLOR VARIATIONS MAY OCCUR | |

| | | | |
|---|--------------------------|--|------------------|
| L-com Global Connectivity | | 45 BEECHWOOD DRIVE NORTH ANDOVER, MA 01845 | |
| CATEGORY D-SUBMINIATURE | | | |
| PRODUCT DESCRIPTION GENDER CHANGER, HD44 MALE/MALE | | | |
| SIZE B | PSCM NO. 43321 | DWG. NO. DGBH44M | REV. G |
| SCALE: 2:1 | | CAD FILE: DGBH44M.SLDRAW | SHEET 1 OF 1 |